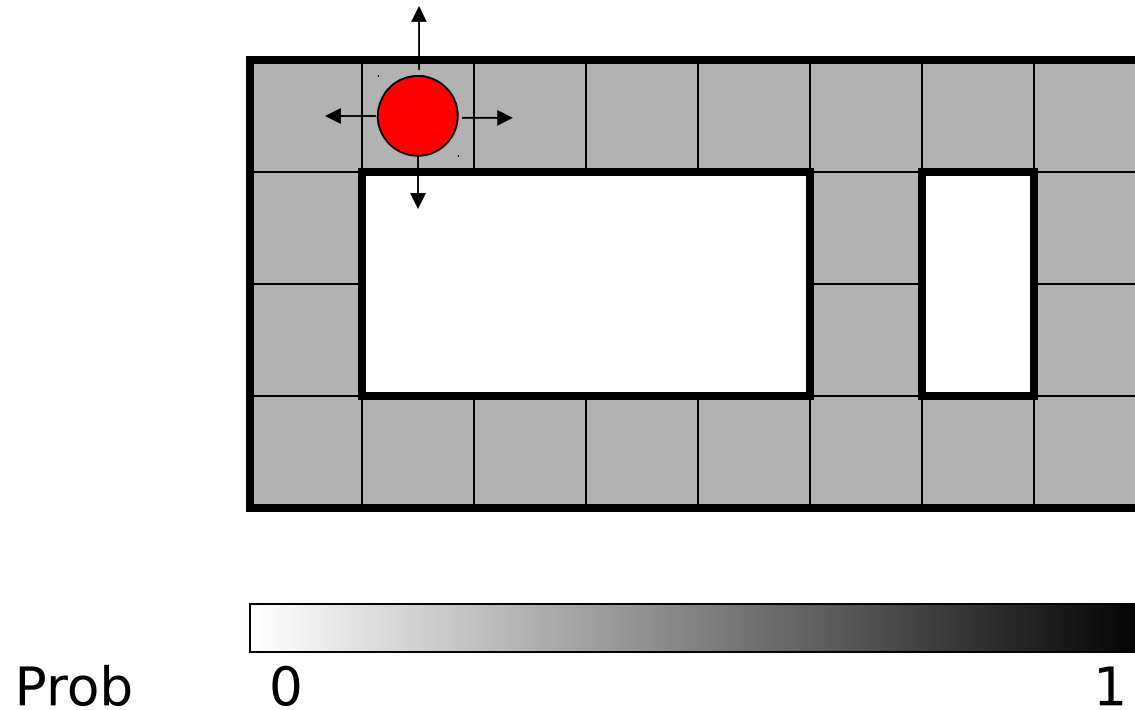


Example: Robot Localization

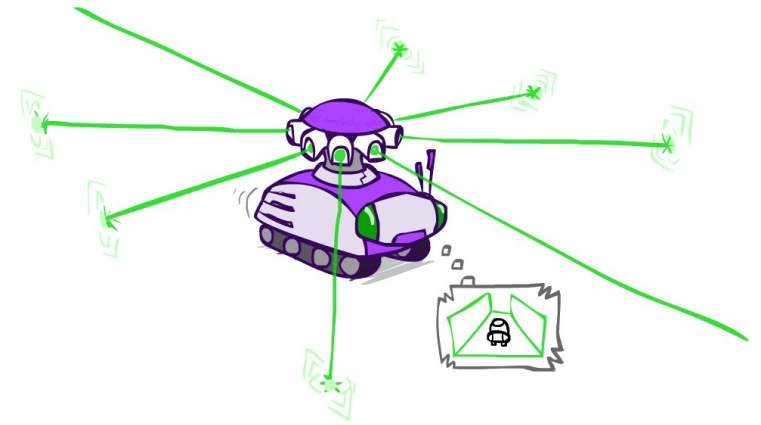
*Example from
Michael
Pfeiffer*



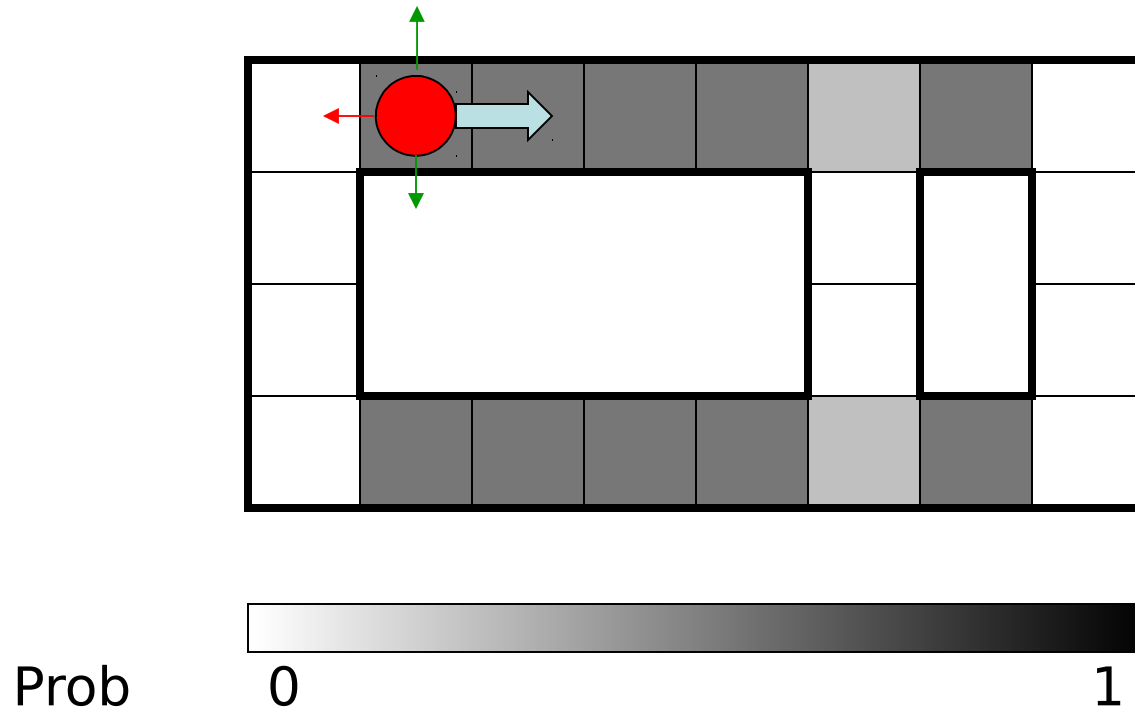
$t=0$

Sensor model: can read in which directions there is a wall,
never more than 1 mistake

Motion model: may not execute action with small prob.

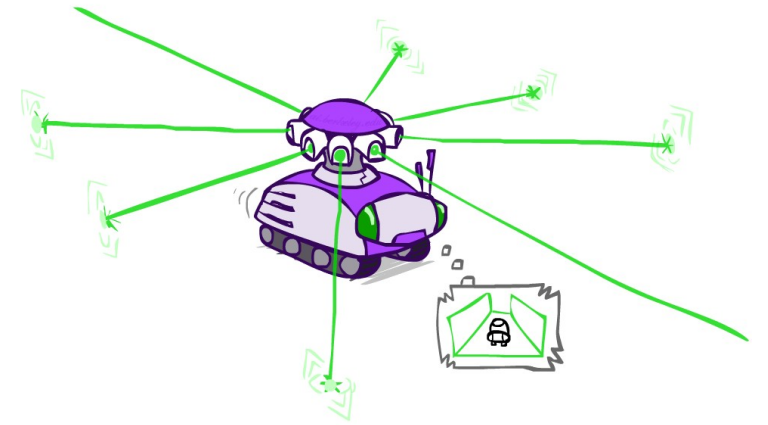


Example: Robot Localization

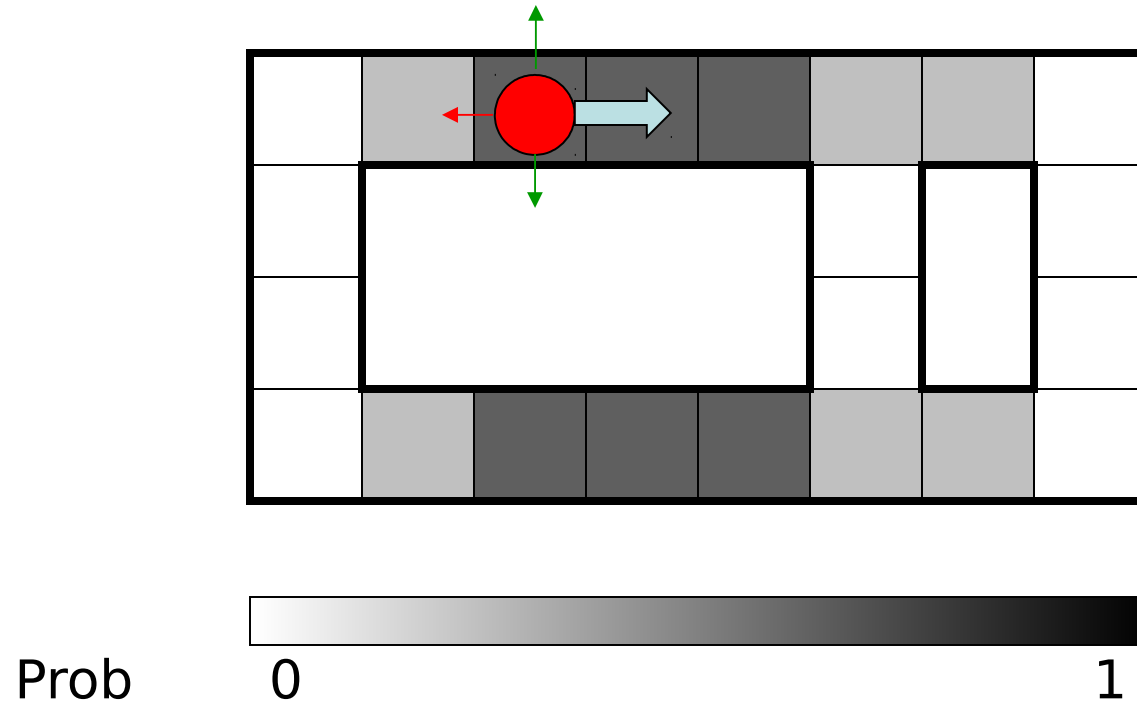


$t=1$

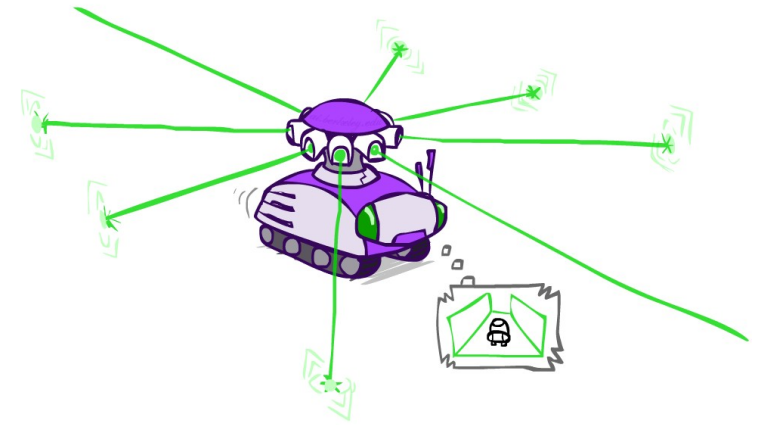
Lighter grey: was possible to get the reading, but less likely b/c required 1 mistake



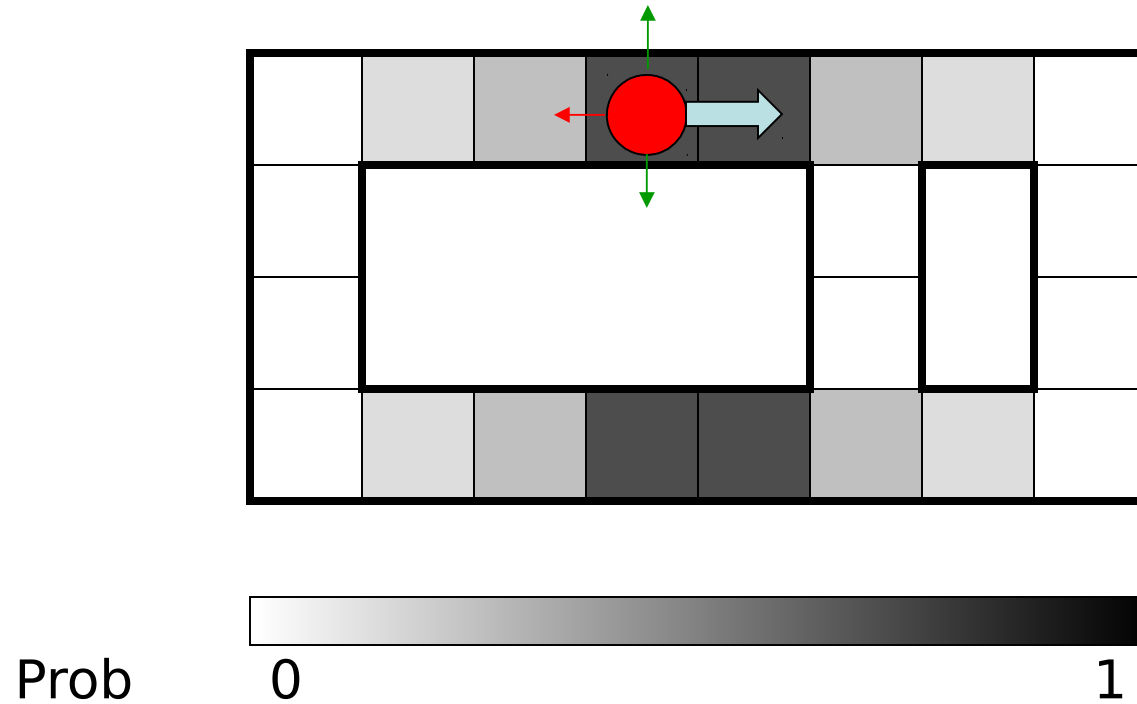
Example: Robot Localization



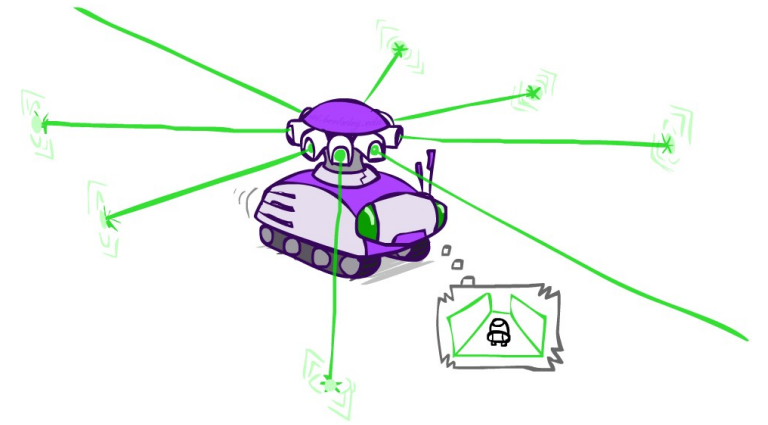
$t=2$



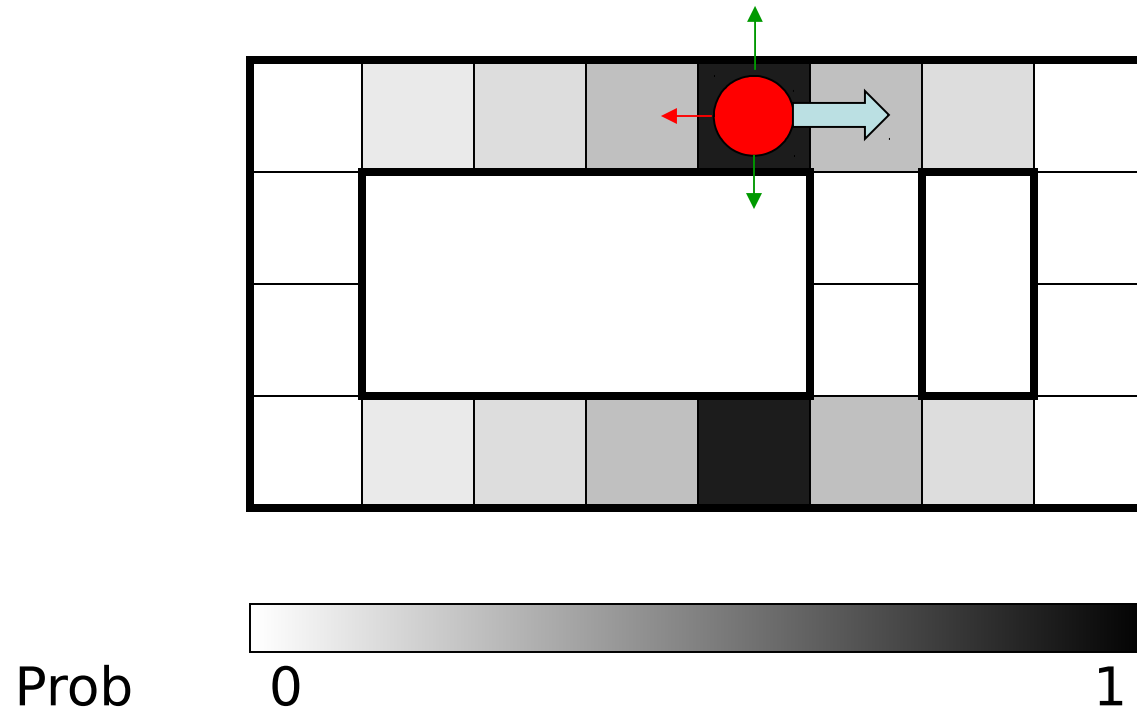
Example: Robot Localization



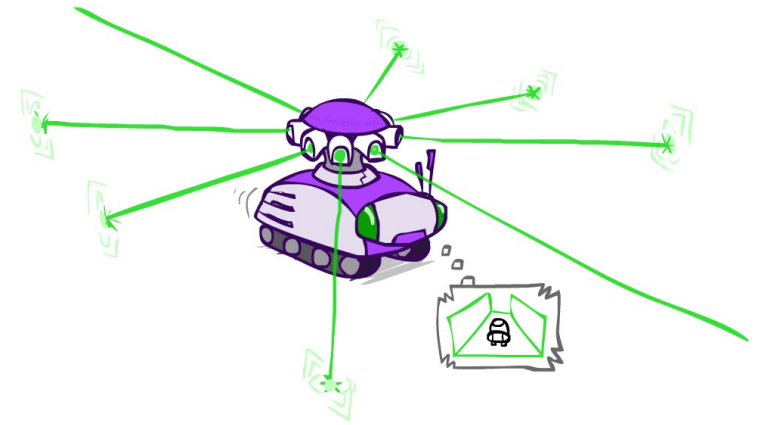
$t=3$



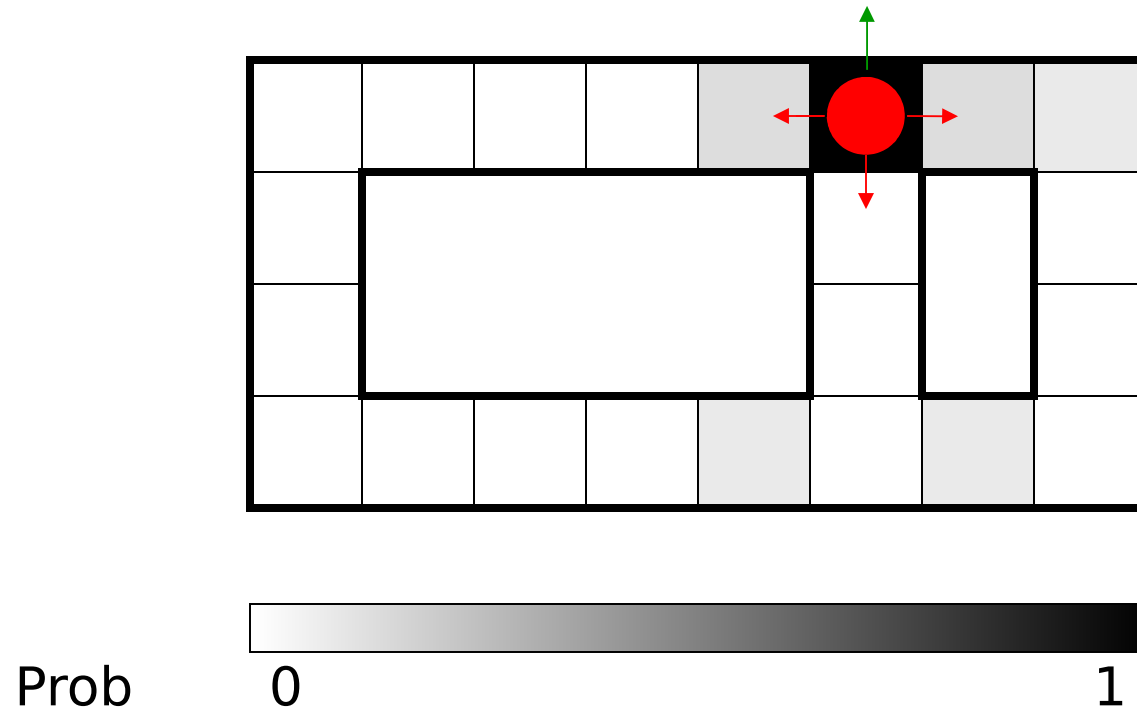
Example: Robot Localization



$t=4$



Example: Robot Localization



$t=5$

