

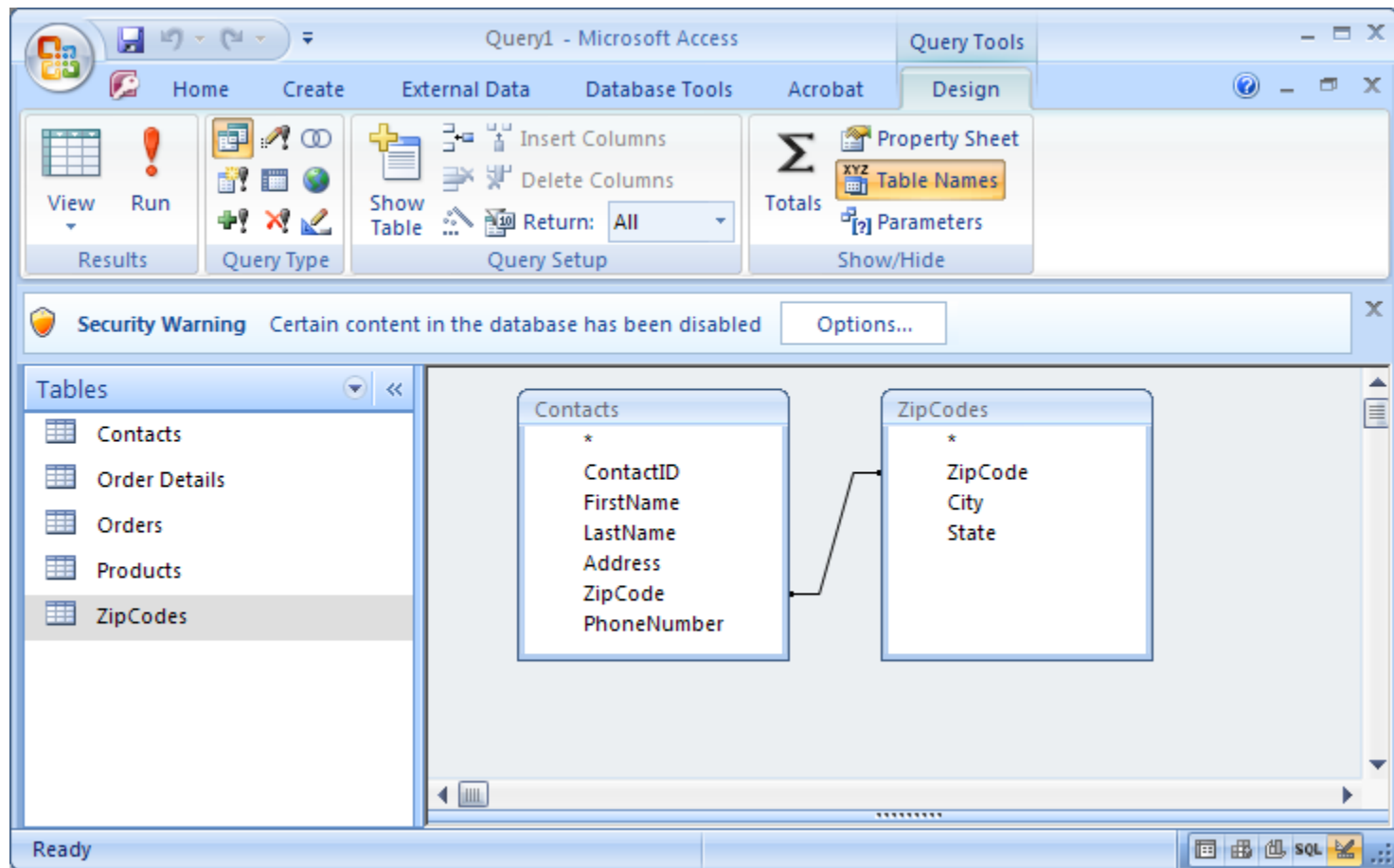
General Instructions : Relate Joined Tables

Copyright 2009
Peter R. Douglass
All rights reserved

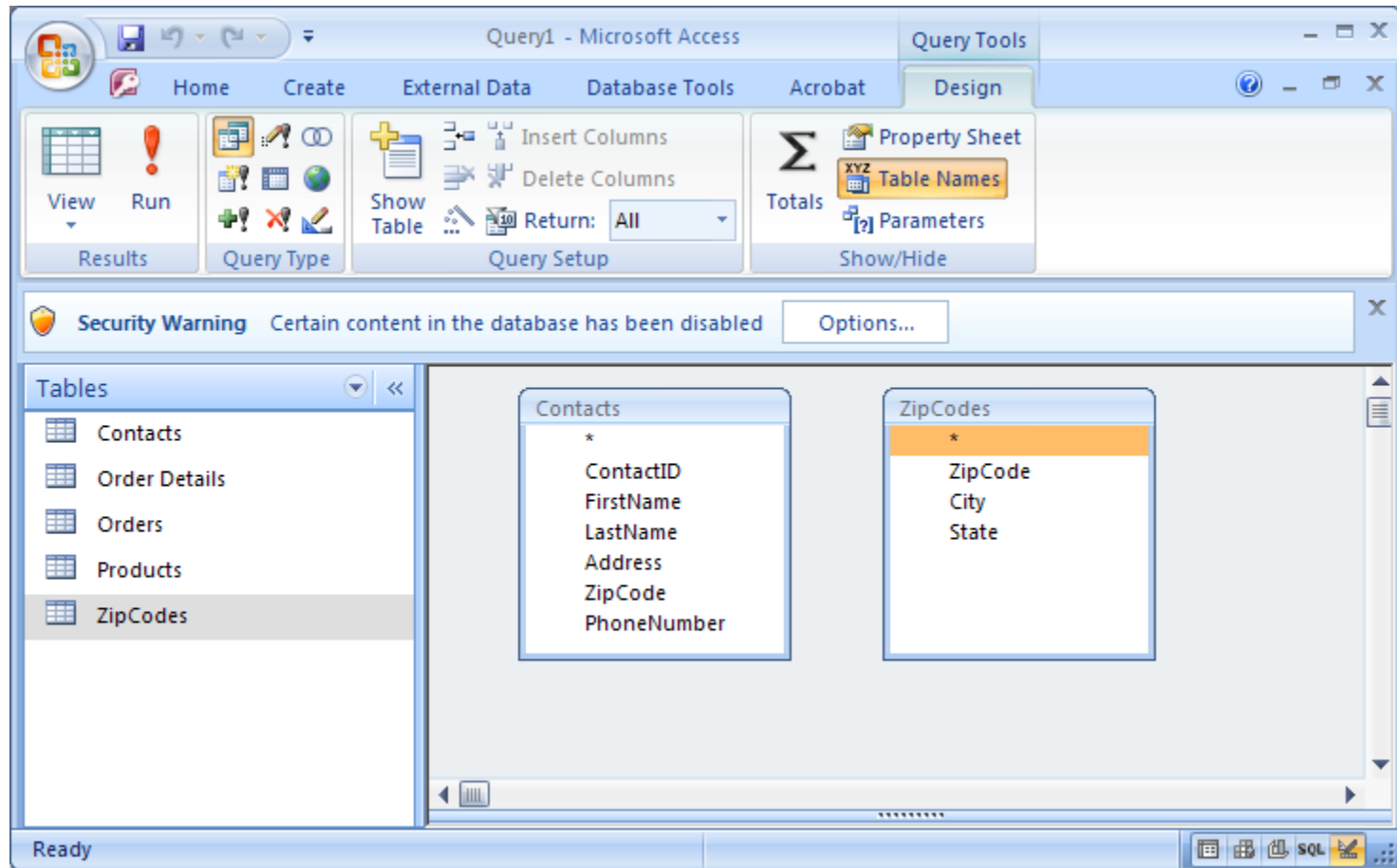
Relate Tables

- None of the problems in this class require the use of an outer-join or Cartesian product.
- Therefore, In this class, if you create a database query that requires more than one table or subquery, then use an equi-join – that is, relate the tables being joined .
- Be sure to relate columns that are appropriate to relate.

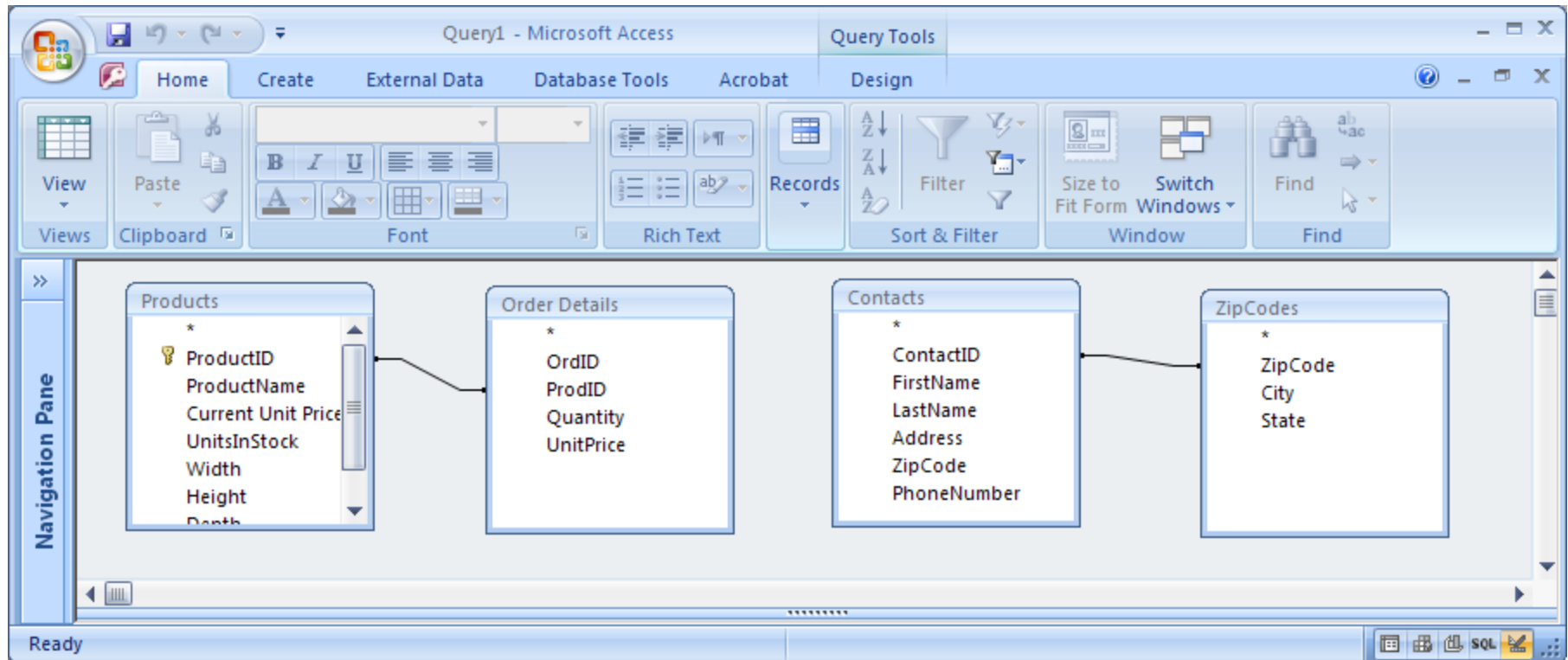
Tables are Related



Don't Leave Tables Unrelated



Don't leave unrelated groups of Tables



Avoid Inappropriate Relations

